



A FULL RANGE OF CAREFULLY ASSEMBLED DOORS FOR MADE-TO-MEASURE WARDROBES, INCLUDING, TWO RUNNERS SYSTEMS; A CLASSIC VERSION INCORPORATING A SOFT STOP SYSTEM FOR THE DOOR AT THE END OF ITS RUN; AN IMPROVED RUNNER CUSHION SYSTEM WITH GRADUAL SOFT CLOSING: EXCLUSIVE **INDAMATIC** SYSTEM BY INDAUX.

"JUNIOR-6"

FURNITURE FITTINGS FOR SUPPORTED SLIDING DOORS.



"JUNIOR-6"

FITTINGS FOR SUPPORTED SLIDING DOORS.

THE JUNIOR-6 IS THE RIGHT PRODUCT FOR THOSE INSTALLATIONS WHERE ANY SIZE IS POSSIBLE, WHETHER CONTRACT OR RENOVATION. ITS DESIGN HAS BEEN CAREFULLY STUDIED TO PROVIDE AN EASY INSTALLATION OF THE WARDROBE AND ADAPTATION WITHOUT ANY SPECIAL FITTING.

THIS SHOULD BE THE REASON FOR CHOOSING A TOP QUALITY WARDROBE WITH MULTIPLE OPTIONS, FINISHES, MODELS, OR RUNNER SYSTEMS.

THE JUNIOR-6 **INDAMATIC** VERSION REPRESENTS THE ULTIMATE IN WARDROBE QUALITY.

WITHOUT A DOUBT, IT SURPASSES OTHER ALTERNATIVES ON THE MARKET AND COULD ONLY COME FROM INDAUX'S INNOVATIVE R&D DIVISION.

pp.

1 "JUNIOR-6" SLIDING DOOR SYSTEMS..... 614

■ "JUNIOR-6" CLASSIC

THE STANDARD VERSION IS EASILY ASSEMBLED AND STANDS OUT DUE TO ITS SOFT AND LIGHT BUT EFFICIENT CLOSING MECHANISM.

References 614
Assembly 615

■ "JUNIOR - 6" INDAMATIC

IMPROVED, EVEN SMOOTHER RUNNERS, THANKS TO THEIR LOWER BEARINGS AND THEIR TRIPLE RUNNING POINTS WHICH PREVENT UNWANTED DOOR MOVEMENT. BUT ABOVE ALL IT IS KNOWN FOR ITS AUTOMATIC AND CUSHIONED GRADUAL SOFT CLOSING.

References 616
Assembly 617

2 "JUNIOR-6" DOOR RANGE..... 618

■ 16 MM DOOR 618

16MM THICK WOODEN DOOR WITH ALUMINIUM HANDLE.

■ 10 MM DOOR 620

10MM THICK WOODEN OR GLASS DOOR WITH ALUMINIUM HANDLE PROFILE.

■ JAPANESE DOOR 622


10MM THICK JAPANESE WOODEN OR GLASS DOOR. AVAILABLE WITH 3 TO 6MM COMBINED CHIPBOARD OR GLASS WITH AN ALUMINIUM HANDLE PROFILE.

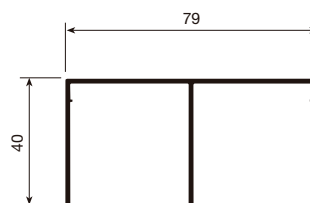
1 "JUNIOR-6" SLIDING DOORS SYSTEMS

"JUNIOR-6" CLASSIC


THE STANDARD VERSION IS EASILY ASSEMBLED AND STANDS OUT DUE TO ITS SOFT AND LIGHT BUT EFFICIENT CLOSING MECHANISM.

DOUBLE UPPER TRACK.

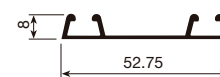
4.2M. BARS			
SILVER-ANODIZED	714.142.100		10
MATT SILVER-ANODIZED	714.142.516		
BRASS-ANODIZED	714.142.785		
BLACK-ANODIZED	714.142.892		
GOLDEN-ANODIZED	714.142.774		
WHITE-LACQUERED RAL 9010	714.142.800		



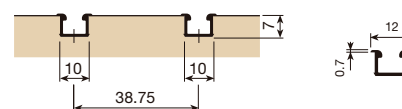
LOWER TRACK.

4.2M BARS	SINGLE	DOUBLE	
SILVER-ANODIZED	714.342.101	714.242.104	10
MATT SILVER-ANODIZED	714.342.510	714.242.513	
BRASS-ANODIZED	714.342.786	714.242.782	
BLACK-ANODIZED	714.342.893	714.242.896	
GOLDEN-ANODIZED	714.342.775	714.242.771	
WHITE-LACQUERED	714.342.801	714.242.804	


DOUBLE




SINGLE

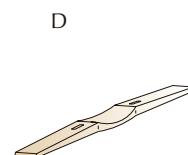
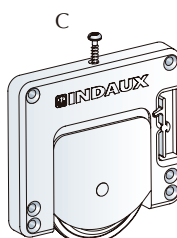
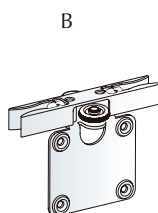
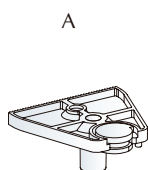


BAG OF COMPONENTS.

50 KP. LOAD	2 DOOR	3 DOOR	
	704.502.105	704.503.100	10

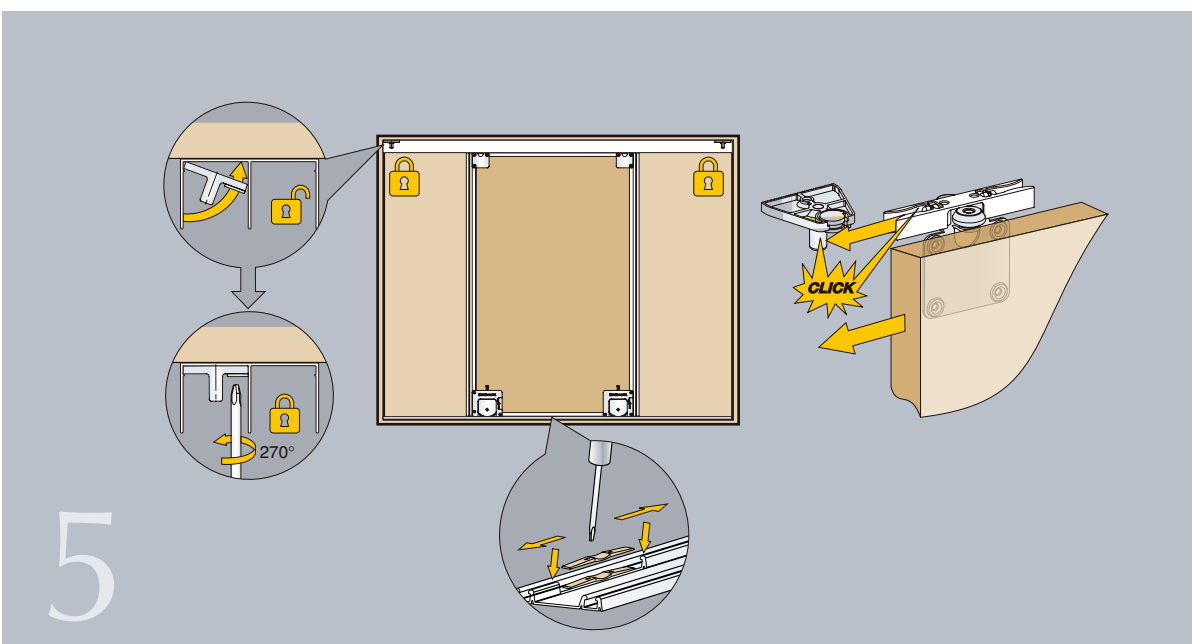
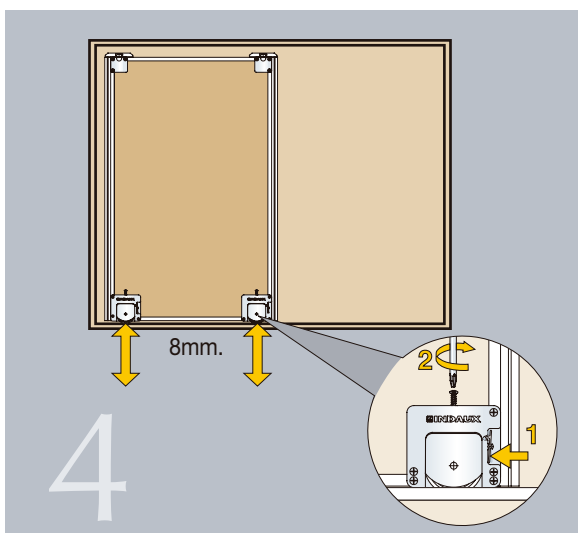
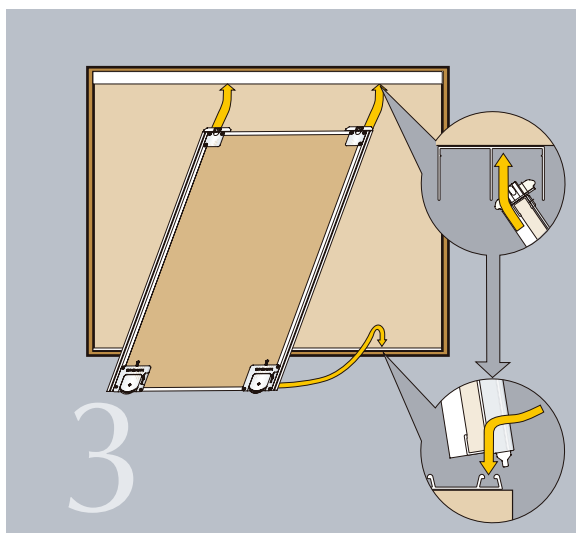
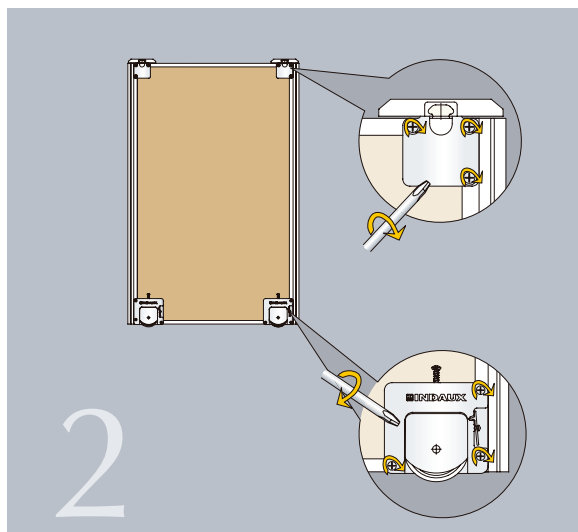
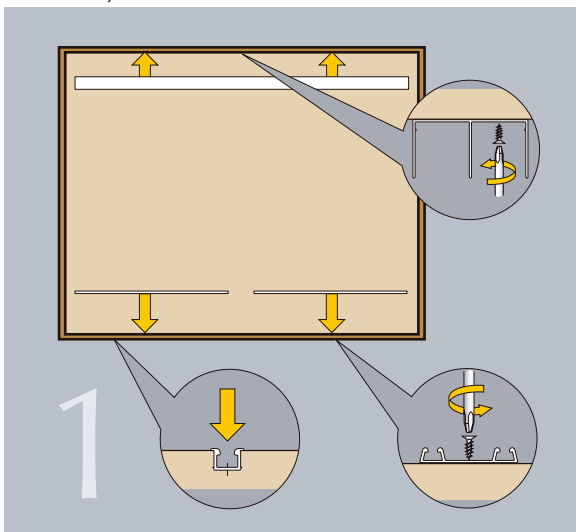
EACH BAG CONTAINS.

	2 DOOR	3 DOOR	
A UPPER TRACK STOP	4 UNITS	4 UNITS	10
B TOP ROLLER	4 UNITS	6 UNITS	
C BOTTOM ROLLER	4 UNITS	6 UNITS	
D DOOR POSITIONER		1 UNIT	



■ "JUNIOR-6" CLASSIC

Assembly



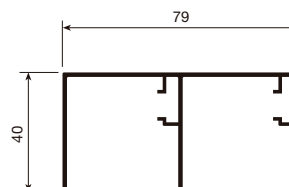
■ "JUNIOR-6" INDAMATIC

IMPROVED, EVEN SMOOTHER RUNNERS, THANKS TO THEIR LOWER BEARINGS AND THEIR TRIPLE RUNNING POINTS WHICH PREVENT UNWANTED DOOR MOVEMENT. BUT ABOVE ALL IT IS KNOWN FOR ITS AUTOMATIC AND CUSHIONED GRADUAL SOFT CLOSING.

INDAmatic
gradual closing

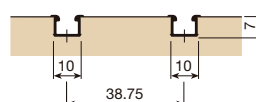
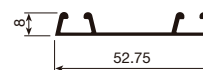
DOUBLE UPPER TRACK.

4.2 M. BARS	INDAMATIC	
SILVER-ANODIZED	715.542.100	10
MATT SILVER-ANODIZED	715.542.516	
BRASS-ANODIZED	715.542.785	
BLACK-ANODIZED	715.542.892	
GOLDEN-ANODIZED	715.542.774	
WHITE-LACQUERED RAL 9010	715.542.800	



LOWER TRACK.

4.2 M BARS	SINGLE	DOUBLE	
SILVER-ANODIZED	714.342.101	714.242.104	10
MATT SILVER-ANODIZED	714.342.510	714.242.513	
BRASS-ANODIZED	714.342.786	714.242.782	
BLACK-ANODIZED	714.342.893	714.242.896	
GOLDEN-ANODIZED	714.342.775	714.242.771	
WHITE-LACQUERED	714.342.801	714.242.804	



BAG OF COMPONENTS.

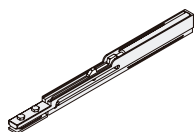
50 KP. LOAD	2 DOOR	3 DOOR	
	704.402.101	704.403.103	5

EACH BAG CONTAINS.

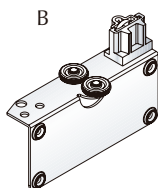
	2 DOOR	3 DOOR	
A CUSHIONED AUTOMATIC GRADUAL CLOSING INDAMATIC	4 UNITS	4 UNITS	10
B R/H TOP ROLLER	2 UNITS	3 UNITS	
C L/H TOP ROLLER	2 UNITS	3 UNITS	
D BOTTOM ROLLER	4 UNITS	6 UNITS	
E DOOR POSITIONER		1 UNIT	

INDAmatic
gradual closing

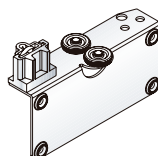
A



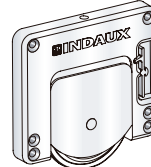
B



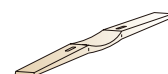
C



D



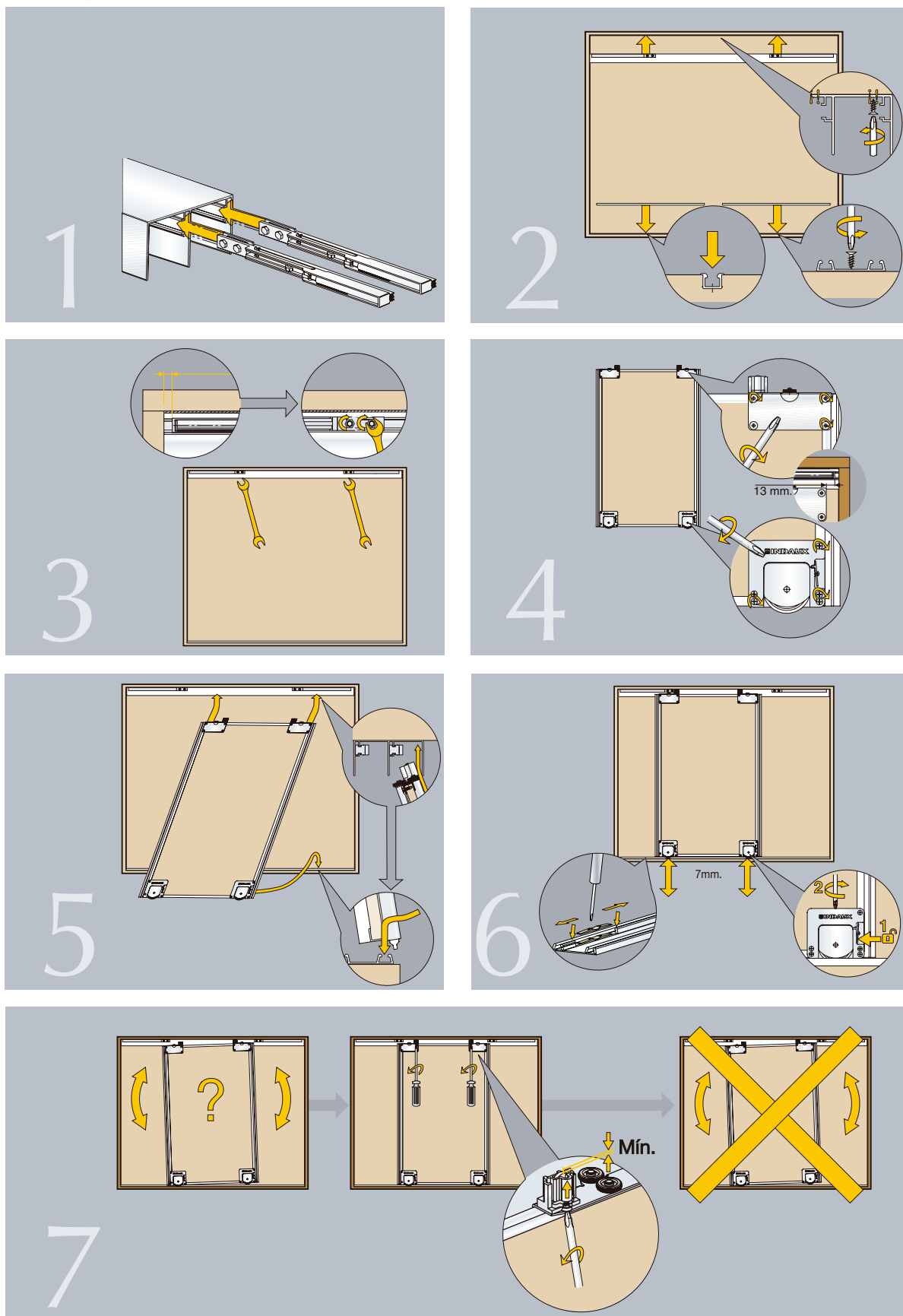
E



■ "JUNIOR-6" INDAMATIC

Assembly

INDAmatic
gradual closing




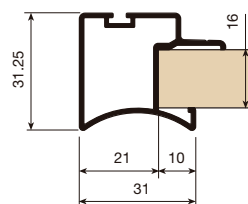
2 "JUNIOR-6" DOOR RANGE

16 MM DOOR


16MM THICK WOODEN DOOR WITH ALUMINIUM HANDLE.

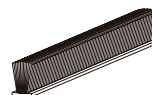
16MM HANDLE PROFILE.

	2,6M. BARS	5,2M. BARS	
SILVER-ANODIZED		714.652.105	 10
MATT SILVER-ANODIZED		714.652.514	
BRASS-ANODIZED		714.652.783	
BLACK-ANODIZED		714.652.890	
GOLDEN-ANODIZED		714.652.772	
WHITE-LACQUERED		714.652.805	
BEECH COATED, NOT VARNISHED	714.626.861		
BEECH COATED, MELAMINE	714.626.415		
PINE VALSAIN COATED, NOT VARNISHED	714.626.872		
PINE VALSAIN COATED, MELAMINE	714.626.441		
OAK COATED, NOT VARNISHED	714.626.905		
OAK COATED, MELAMINE	714.626.721		
SAPOLI COATED, NOT VARNISHED	714.626.931		
SAPOLI COATED, MELAMINE	714.626.732		
COATED, NOT VARNISHED CHERRY	714.626.942		
CHERRY COATED, MELAMINE	714.626.883		



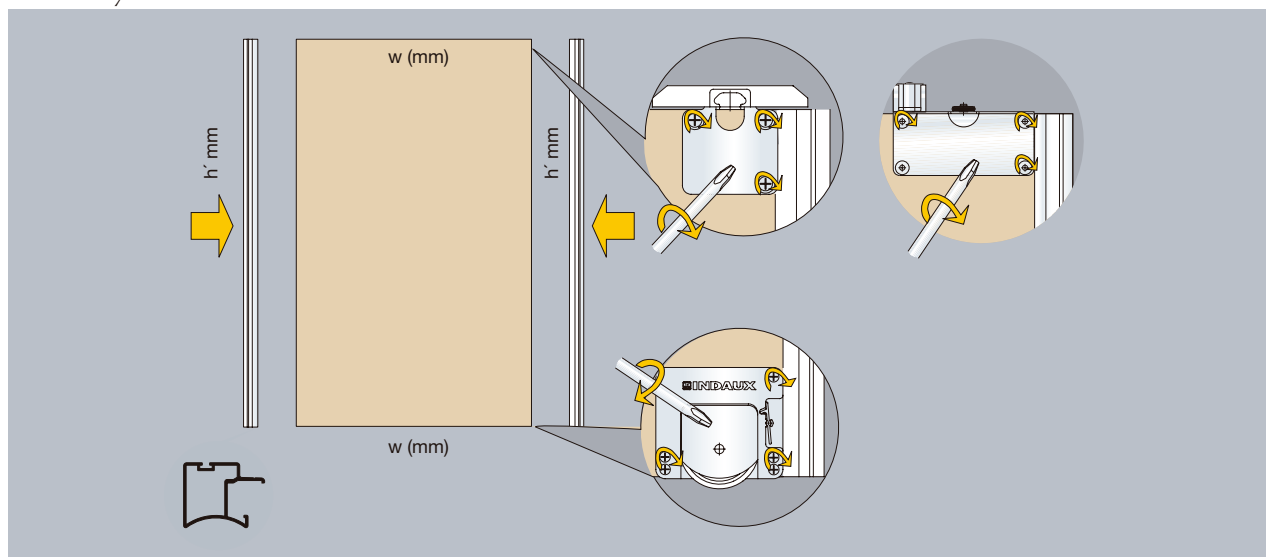
DUST STRIP.

SIZE	ROLL	GREY	
5.5 MM. X 10 MM.	250 M.	753.110.105	 1



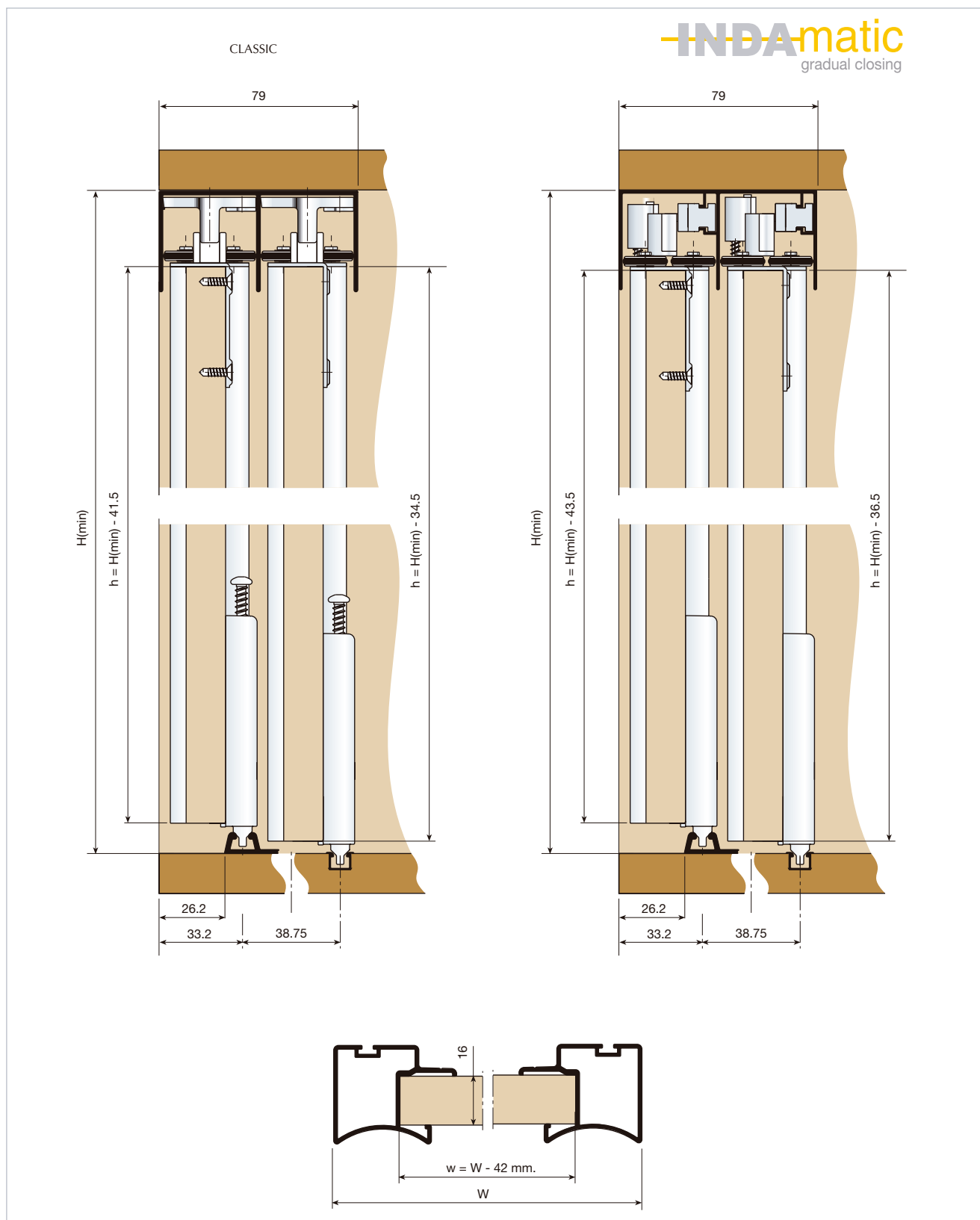
THE DUST STRIP SHOULD BE CUT ACCORDING TO THE DOOR'S LENGTH. A STANDARD 250M ROLL LENGTH IS SUPPLIED.

Assembly



■ 16 MM DOOR

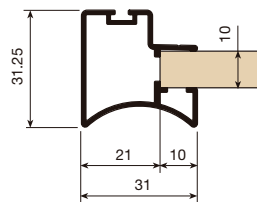
Technical data



10 MM DOOR

10MM THICK WOODEN OR GLASS DOOR WITH ALUMINIUM HANDLE PROFILE.

PROFILE



10MM HANDLE PROFILE.

	2,6 M. BARS	5,2 M. BARS	
SILVER-ANODIZED		714.552.101	10
MATT SILVER-ANODIZED		714.552.510	
BRASS-ANODIZED		714.552.786	
BLACK-ANODIZED		714.552.893	
GOLDEN-ANODIZED		714.552.775	
WHITE-LACQUERED		714.552.801	
BEECH-COATED, NOT VARNISHED	714.526.864		
BEECH-COATED, MELAMINE	714.526.411		
PINE VALSAIN COATED, MELAMINE	714.526.875		
PINE VALSAIN COATED, NOT VARNISHED	714.526.444		
OAK COATED, NOT VARNISHED	714.526.901		20
OAK COATED, MELAMINE	714.526.724		
SAPÉLI COATED, NOT VARNISHED	714.526.934		
SAPÉLI COATED, MELAMINE	714.526.735		
CHERRY COATED, NOT VARNISHED	714.526.945		
CHERRY COATED, MELAMINE	714.526.886		

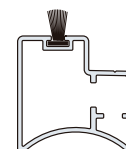
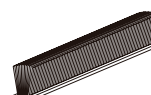
10MM EDGE PROFILE.

	2 M. BARS	
714.820.105		20
714.820.514		
714.820.783		
714.820.890		
714.820.772		
714.820.805		
714.820.864		
714.820.411		
714.820.875		
714.820.444		
714.820.901		
714.820.724		
714.820.934		
714.820.735		
714.820.945		
714.820.886		

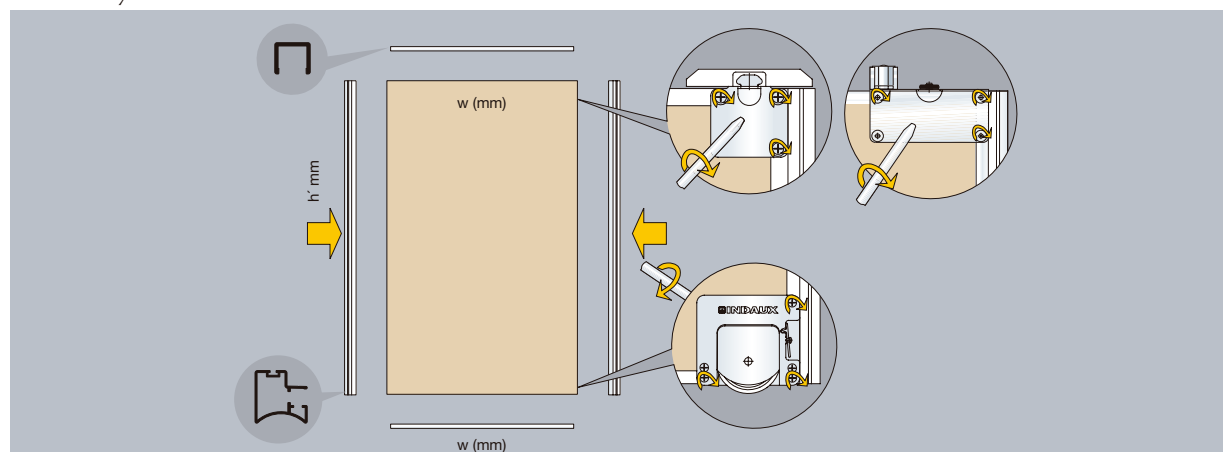
DUST STRIP.

SIZE	ROLL	GREY	
5.5 MM. X 10 MM.	250 M.	753.110.105	1

THE DUST STRIP SHOULD BE CUT ACCORDING TO THE DOOR'S LENGTH. A STANDARD 250M ROLL LENGTH IS SUPPLIED

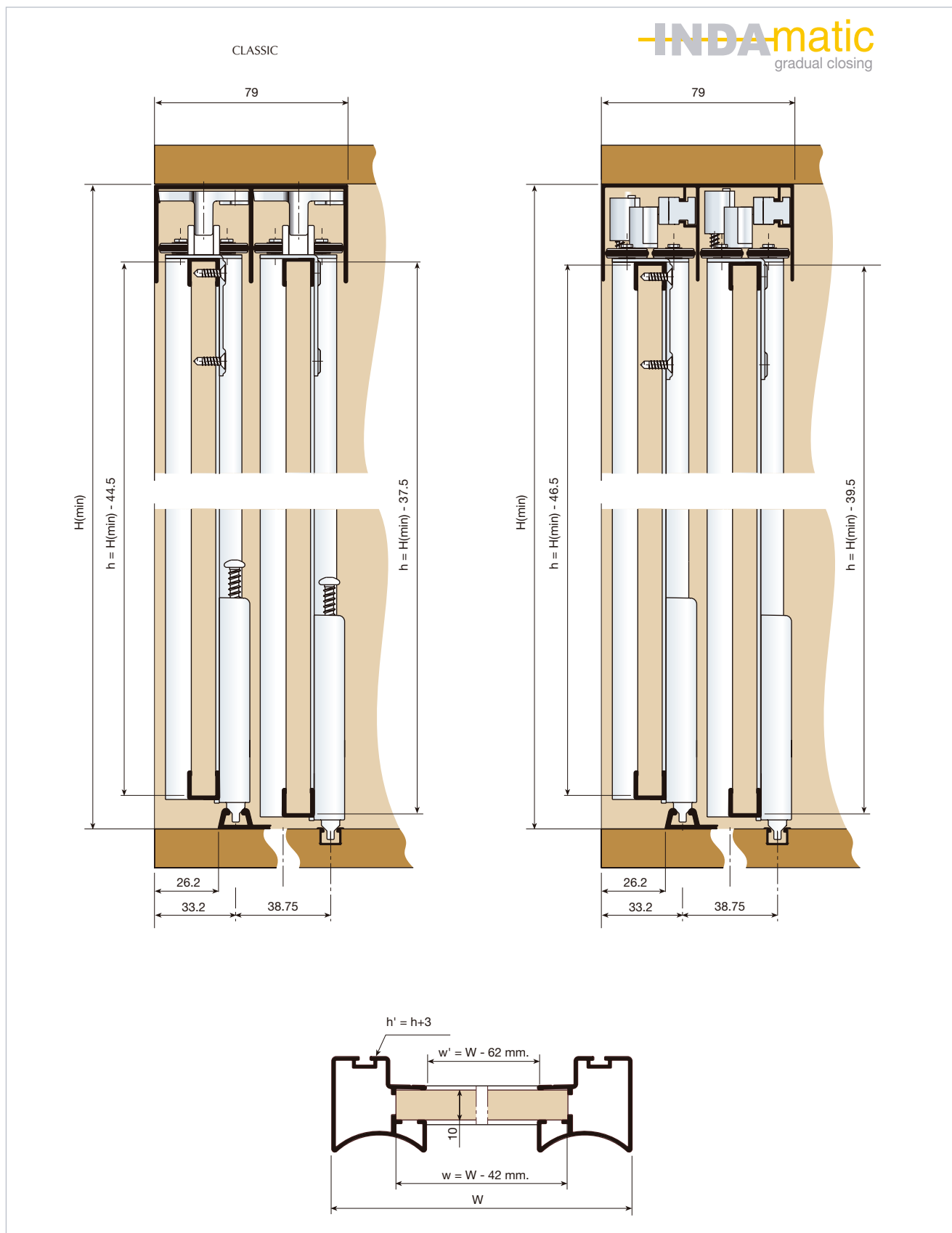


Assembly



■ 10 MM DOOR

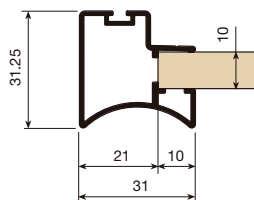
Technical data



JAPANESE DOOR

JAPANESE WOODEN CHIPBOARD OR GLASS 10,6,5,4 AND 3MM COMBINED DOORS WITH ALUMINUM HANDLE PROFILE. A VARIETY OF COMBINATIONS IS POSSIBLE; ALL PROFILES ARE REVERSIBLE OFFERING MANY COMBINATIONS. HERE ARE JUST A FEW EXAMPLES.

10MM CHIPBOARD OR GLASS PROFILES



HANDLE PROFILE.

	2,6 M. BARS	5,2 M. BARS	
SILVER-ANODIZED		714.552.101	10
MATT SILVER-ANODIZED		714.552.510	
BRASS-ANODIZED		714.552.786	
BLACK-ANODIZED		714.552.893	
GOLDEN-ANODIZED		714.552.775	
WHITE-LACQUERED		714.552.801	
BEECH COATED, NOT VARNISHED	714.526.864		
BEECH COATED, MELAMINA	714.526.411		
PINE VALSAIN COATED, NOT VARNISHED	714.526.875		
PINE VALSAIN COATED, MELAMINE	714.526.444		
OAK-COATED, NOT VARNISHED	714.526.901		
OAK-COATED, MELAMINE	714.526.724		
SAPOLI COATED, NOT VARNISHED	714.526.934		
SAPOLI COATED, MELAMINE	714.526.735		
CHERRY COATED, NOT VARNISHED	714.526.945		
CHERRY COATED, MELAMINE	714.526.886		

EDGE PROFILE.

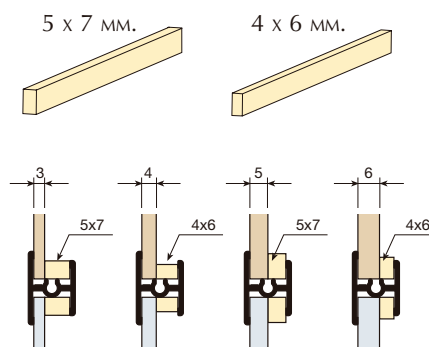
11,5 MM	110 MM	
2 M. BARS		
714.820.105	715.020.106	20
714.820.514	715.020.515	
714.820.783	715.020.784	
714.820.890	715.020.891	
714.820.772	715.020.773	
714.820.805	715.020.806	
714.820.864	715.020.865	
714.820.411	715.020.412	
714.820.875	715.020.876	
714.820.444	715.020.445	
714.820.901	715.020.902	
714.820.724	715.020.725	
714.820.934	715.020.935	
714.820.735	715.020.736	
714.820.945	715.020.946	
714.820.886	715.020.880	

A 110MM PROFILE IS SUFFICIENT TO HIDE THE WHEEL WHEN USING GLASS IN THE LOWER OR UPPER PANEL

RUBBER GLASS GASKET.

GLASS	SIZE	ROLL	TRANSLUCENT	
3 Y 5 MM.	5 x 7 MM.	250 M.	753.503.310	1
4 Y 6 MM.	4 x 6 MM.	250 M.	753.504.312	

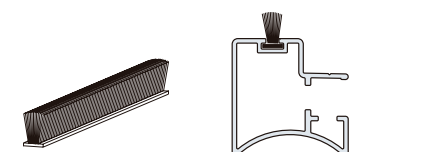
1 ROLL PER BOX



DUST STRIP.

SIZE	ROLL	GREY	
5.5 MM. x 10 MM.	250 M.	753.110.105	1

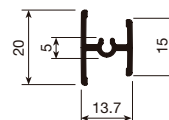
THE DUST STRIP SHOULD BE CUT ACCORDING TO THE DOOR'S LENGTH. A STANDARD 250M ROLL LENGTH IS SUPPLIED



JAPANESE DOOR

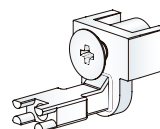
10MM. DIVIDER PROFILE.

	2 M. BARS	
SILVER-ANODIZED	714.920.102	20
MATT SILVER-ANODIZED	714.920.511	
BRASS-ANODIZED	714.920.780	
BLACK-ANODIZED	714.920.894	
GOLDEN-ANODIZED	714.920.776	
WHITE-LACQUERED	714.920.802	
BEECH COATED, NOT VARNISHED	714.920.861	
BEECH COATED, MELAMINE	714.920.415	
VALSAIN PINE, NOT VARNISHED	714.920.872	
VALSAIN PINE, MELAMINE	714.920.441	
OAK COATED, NOT VARNISHED	714.920.905	
OAK COATED, MELAMINE	714.920.721	
SAPELI COATED, NOT VARNISHED	714.920.931	
SAPELI COATED, MELAMINE	714.920.732	
CHERRY COATED, NOT VARNISHED	714.920.942	
CHERRY COATED, MELAMINE	714.920.883	



ASSEMBLY BAG FOR 2-DOOR WARDROBE.

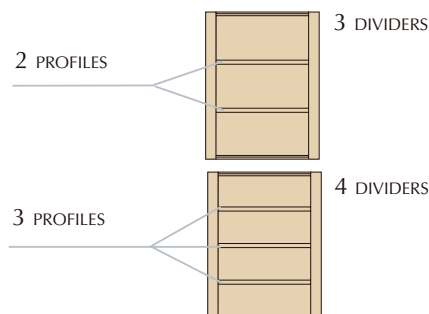
50 KP. LOAD	2 DIVIDERS	3 DIVIDERS	
	704.602.102	704.603.104	20



EACH BAG CONTAINS FITTINGS FOR TWO DOORS:

2 PROFILE	3 DIVIDERS (OR 3- 2 PROFILE DOORS)
8 UNITS	12 UNITS

EACH BOX CONTAINS 20 BAGS. EACH BAG IS SUFFICIENT FOR 2 DOORS.



Assembly

