

Fittings for hanging doors

ALUMINIUM AND STEEL FITTINGS FOR HANGING SLIDING DOORS.

	<i>pp.</i>
1 "MASTER LUX"	586
<hr/>	
2 "MASTER MAS"	590
<hr/>	
3 "GHOST"	594

1 "MASTER LUX"

THE ALUMINIUM SYSTEM PERMITS DOOR THICKNESSES OF UP TO 25-30-42- 50MM.
THERE ARE FITTINGS FOR 50 AND 100 KG FOR EACH THICKNESS AND FOR EACH FITTING THERE ARE TWO MEASUREMENTS FOR THE DISTANCE FROM THE DOOR TO THE FLOOR 17 AND 33MM.

UPPER TRACK.

	CUT-SIZE	6 M BARS	
NATURAL	707.000.501	707.060.502	6



HEAVY DUTY UPPER TRACK.

	CUT-SIZE	6 M BARS	
NATURAL	707.100.505	707.160.506	4



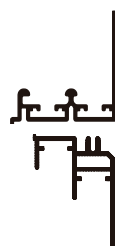
LOWER TRACK.

	CUT-SIZE	6 M BARS	
NATURAL	707.300.506	707.360.500	4



SET OF UPPER AND LOWER TRACK.

	CUT-SIZE	
NATURAL	707.200.502	1



30MM DUST GUARD FOR EXTERIOR DOOR.

760	704.908.142		
860	704.909.144		
960	704.910.146		
1060	704.911.141	5	



MASTERLUX FITTING PACKS.

LOAD	SKIRTING BOARD	INTERIOR DOOR	EXTERIOR 30MM.	EXTERIOR 40MM.	EXTERIOR 50MM.	
50Kp.	17 MM.	706.900.106	706.800.102			
	33 MM.	705.100.104	705.000.100			
100Kp.	17 MM.	706.910.105	706.810.101	706.840.105		
	33 MM.	705.110.103	705.010.106		706.850.104	1

IT CONTAINS THE UPPER AND LOWER ROLLERS, BRAKES, STOPS AND FIXING SCREWS Ø3.9 X 13 NECESSARY FOR ONE DOOR.

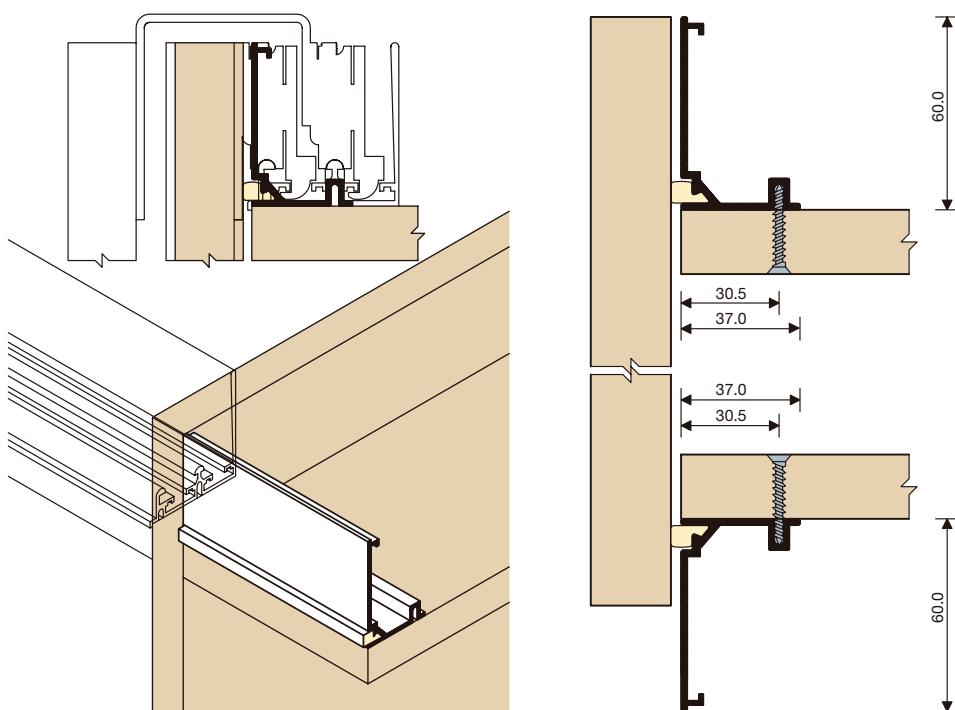
EXTERIOR DOOR KIT		RIGHT	LEFT	STOP
	Up			
	Down			
INTERIOR DOOR KIT	Up			
	Down			

"ALTER" SYSTEM

ALUMINIUM TRACK THAT GIVES CONTINUITY TO THE CUPBOARD'S STRUCTURE WHEN LEAF DOORS ARE USED ALONGSIDE SLIDING SYSTEMS.

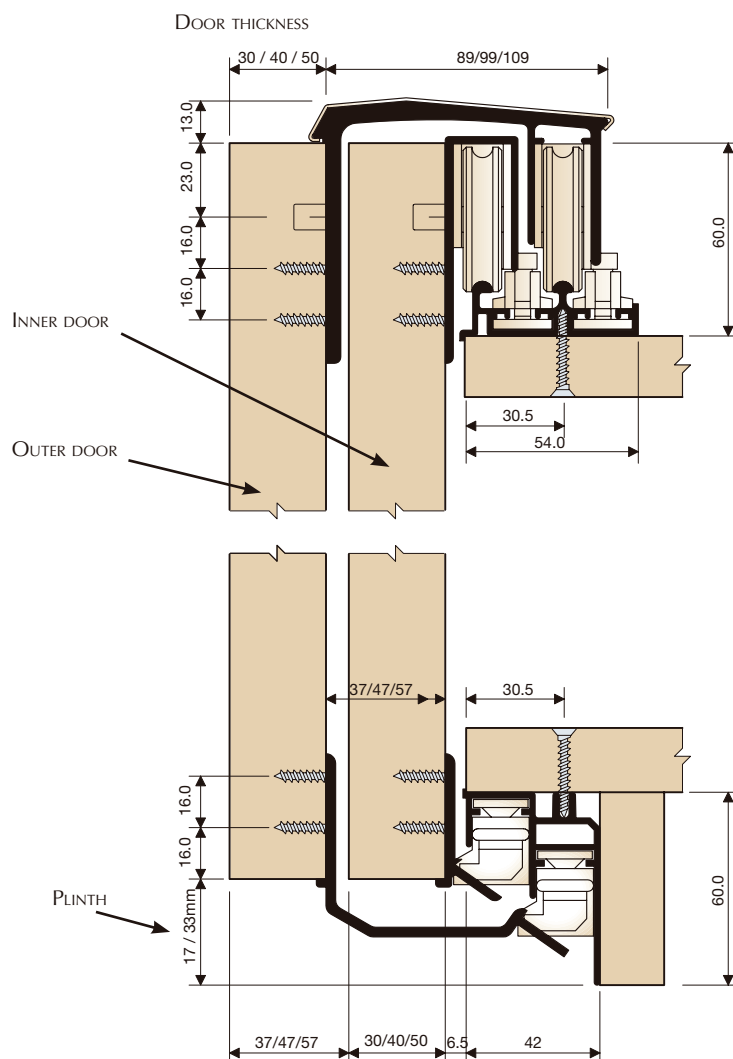
"ALTER SYSTEM" TRACK.

CUT-TO-MEASURE	
707.400.503	10

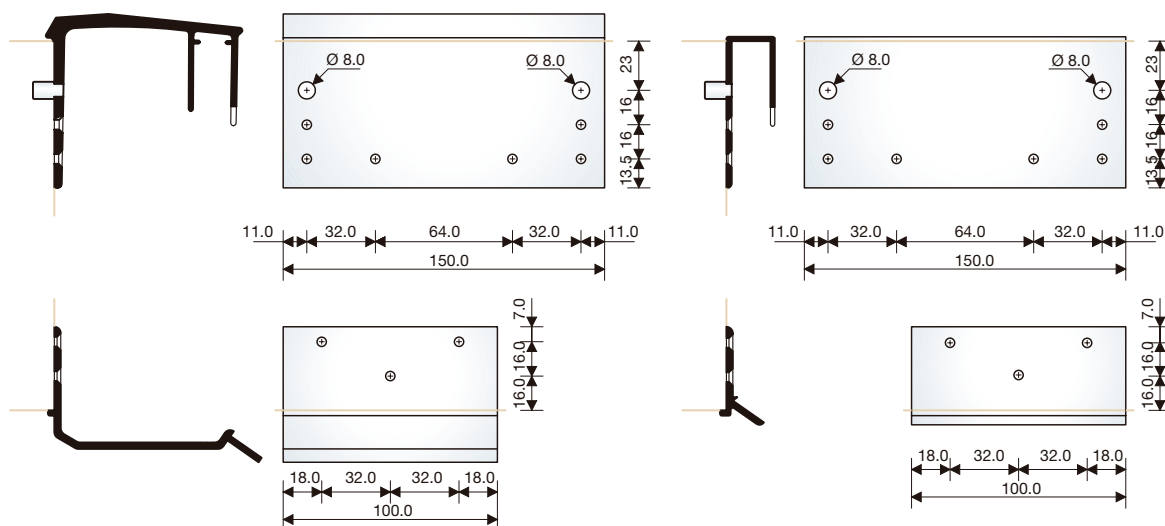


TECHNICAL DATA

Assembling scheme



Drilling plan



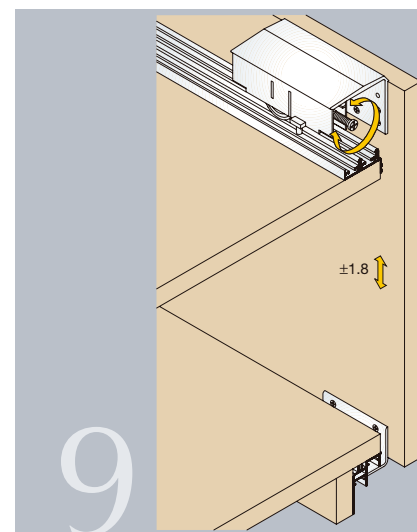
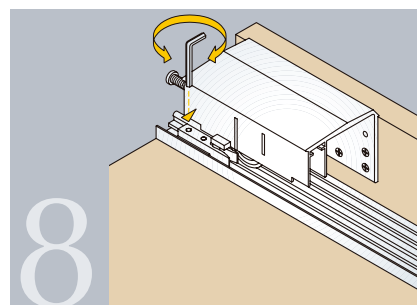
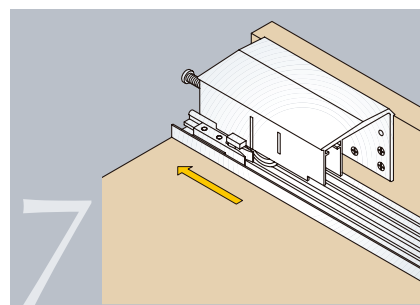
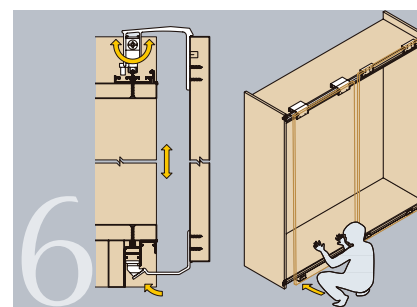
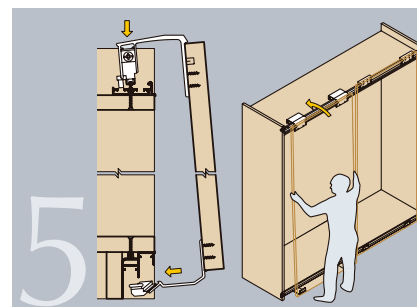
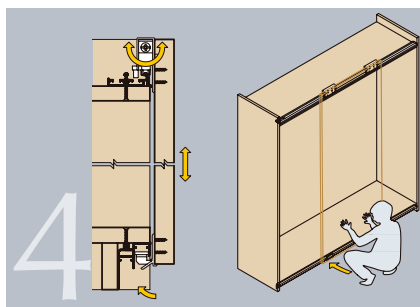
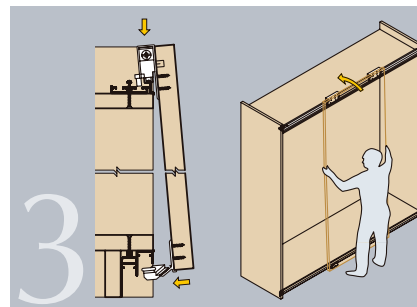
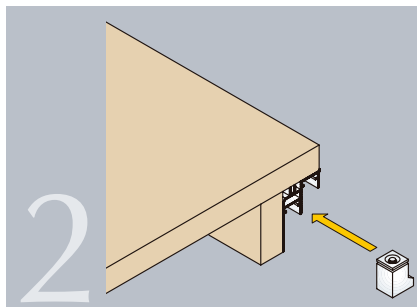
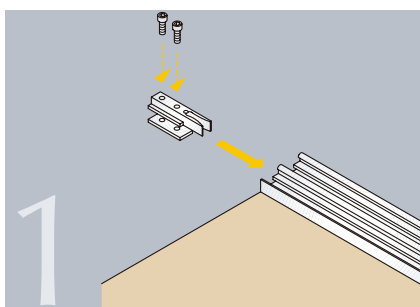
TECHNICAL DATA

Assembly

PLACE UPPER BRAKES AND LOWER STOPS BEFORE MOUNTING THE TRACK (SEE DIAGRAM 1 AND 2). SCREW TRACKS FROM INSIDE THE WARDROBE FIRST PLACE THE INNER DOORS AND THEN THE OUTER DOORS. PLACE THE DOORS IN THE UPPER TRACK AND THEN PUSH THEM DOWN GENTLY SO THAT THE FITTING IS INSERTED INTO THE LOWER TRACK (SEE DIAGRAM 3 AND 5).

HEIGHT ADJUSTMENT Laterally (SEE DIAGRAMS 4 AND 6).


Fix stops and brakes once the door is mounted. FOLLOW REVERSE PROCEDURE, FOR DISMANTLING.




2 "MASTER MAS"

THE ALUMINIUM SYSTEM PERMITS DOOR THICKNESSES OF UP TO 25-30-42-50MM. THERE ARE FITTINGS FOR 50 AND 100 KG FOR EACH THICKNESS AND FOR EACH FITTING THERE ARE TWO MEASUREMENTS FOR THE DISTANCE FROM THE DOOR TO THE FLOOR 17 AND 33MM.


UPPER TRACK.

	CUT-TO-MEASURE	6 MM. BAR	
NATURAL	707.000.501	707.060.502	6


HEAVY DUTY UPPER TRACK.

	CUT-TO-MEASURE	6 MM. BAR	
NATURAL	707.100.505	707.160.506	4


LOWER TRACK.

	CUT-TO-MEASURE	6 MM. BAR	
NATURAL	707.300.506	707.360.500	4


SET OF UPPER AND LOWER TRACKS Ø16.

	CUT-TO-MEASURE	
NATURAL	707.200.502	1

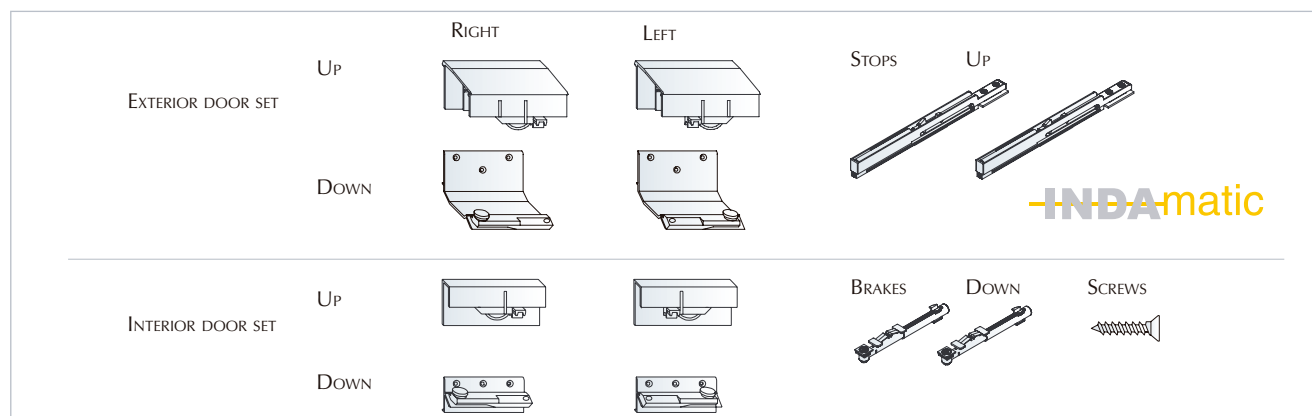
30 MM DUST GUARD FOR EXTERIOR DOOR.

		
760	704.908.142	5
860	704.909.144	
960	704.910.146	
1060	704.911.141	

"MASTER MAS" SET OF FITTINGS.

LOAD	SKIRTING BOARD	INTERIOR DOOR	EXTERIOR 30MM.	EXTERIOR 40MM.	EXTERIOR 50MM.	
50Kp.	17 MM.	705.157.106	705.057.102			1
	33 MM.	705.150.106	705.050.102			
100Kp.	17 MM.	705.167.105	705.067.101	703.840.174		
	33 MM.	705.160.105	705.060.101		703.850.335	

IT CONTAINS THE UPPER AND LOWER ROLLERS, UPPER SELF-CLOSING, LOWER DAMPER AND 18 FIXING SCREWS Ø3.9 X 13 NECESSARY FOR ONE DOOR.

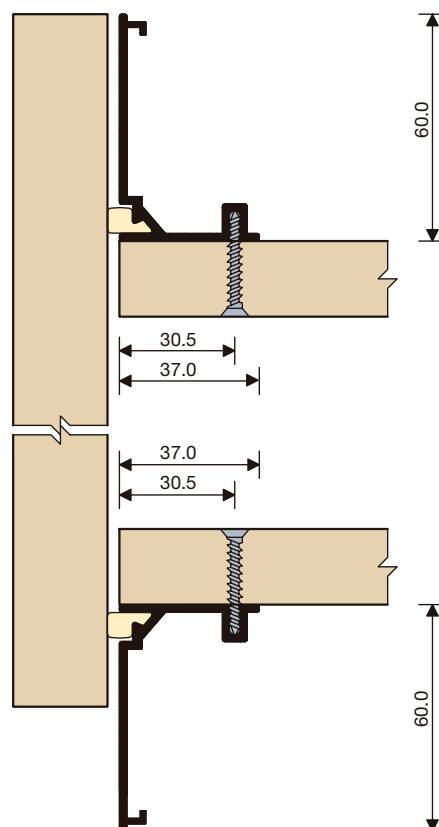
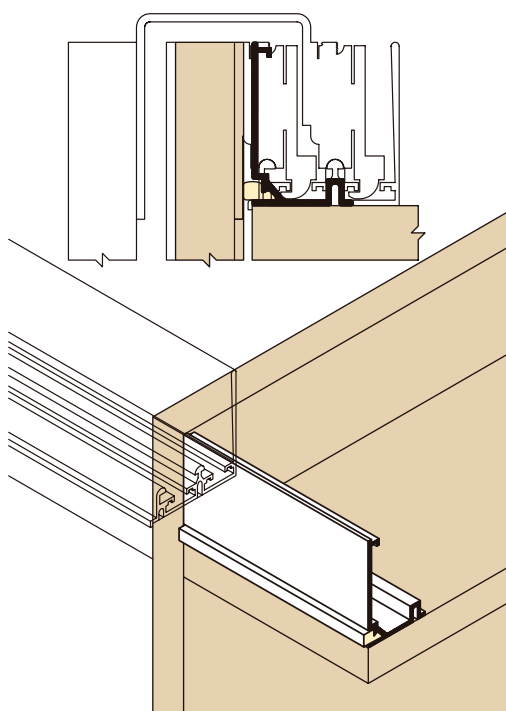


■ "ALTER" SYSTEM

ALUMINIUM TRACK THAT GIVES CONTINUITY TO THE CUPBOARD'S STRUCTURE WHEN LEAF DOORS ARE USED ALONGSIDE SLIDING SYSTEMS.

"ALTER" SYSTEM TRACK.

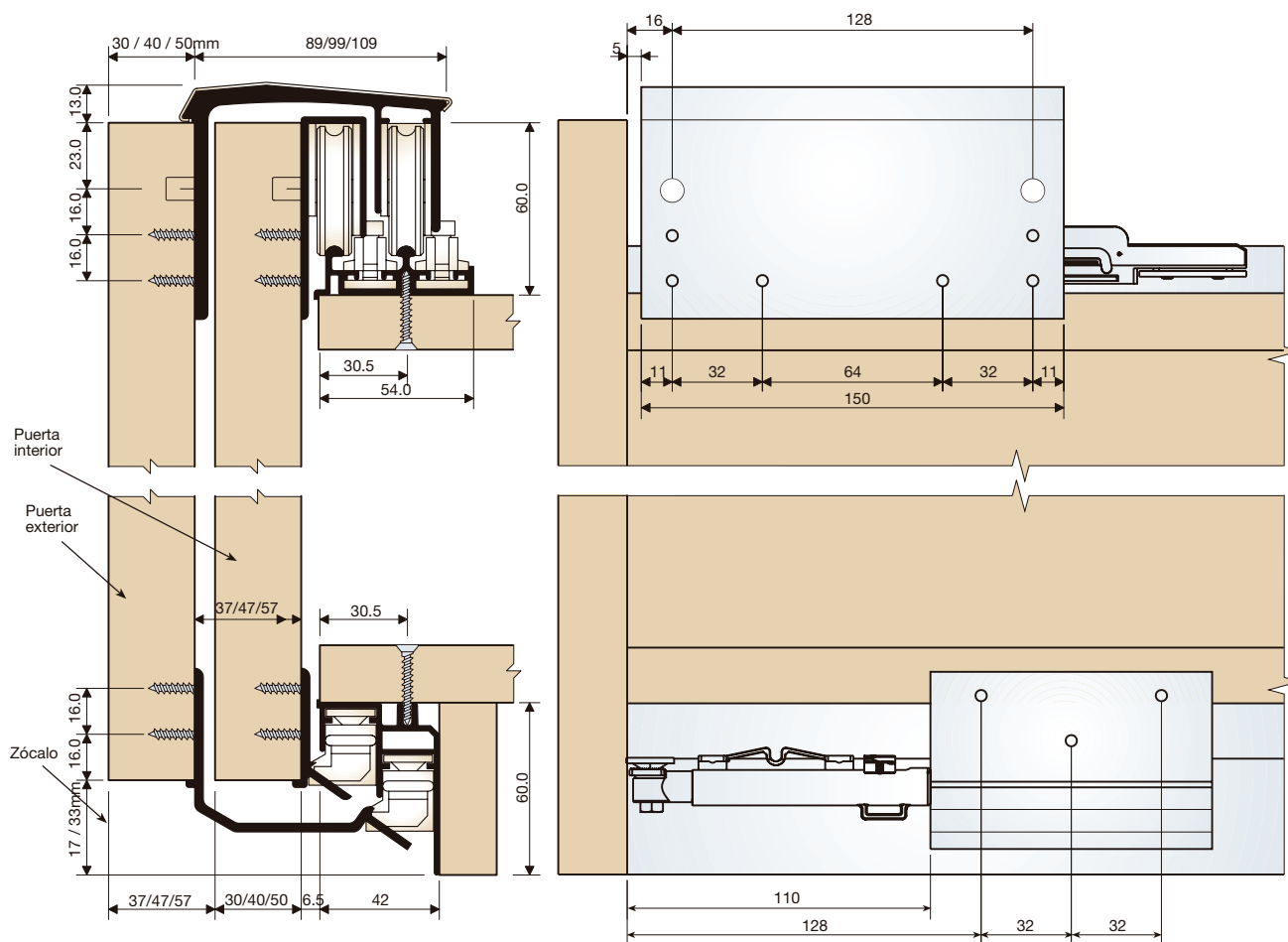
	CUT-TO-MEASURE	
	707.400.503	10



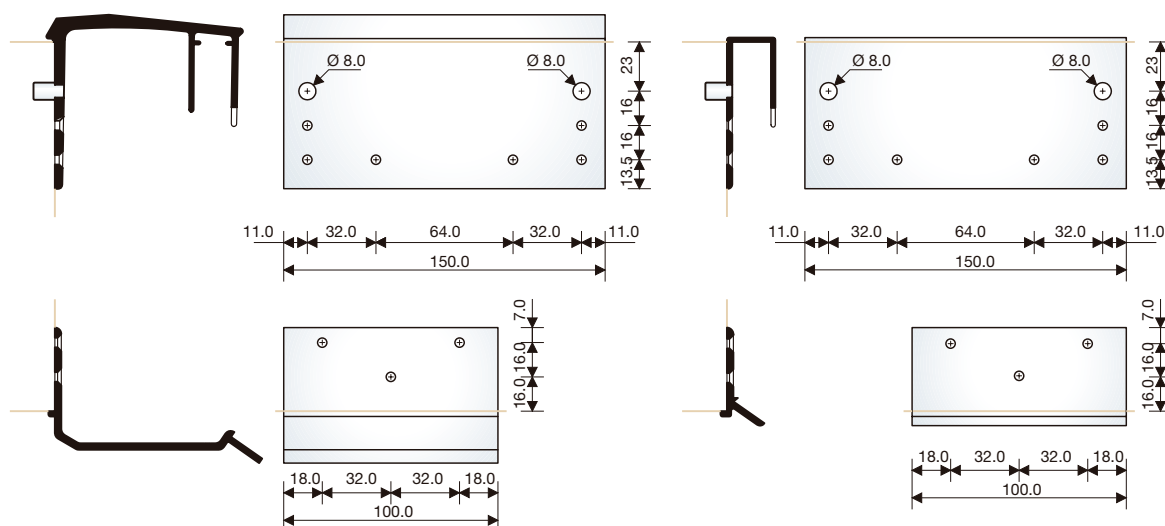
■ TECHNICAL DATA

INDAmatic
gradual closing

Assembly diagram



Drilling diagram



■ TECHNICAL DATA

Assembly



ASSEMBLE THE UPPER TRACK. INSERT THE INDAMATIC SELF-CLOSING SYSTEM, PLACING THE SCREWS TOWARDS THE CENTRE OF THE CABINET. (DIAGRAM 1)

(DIAGRAM 1)

SECURE THE SELF-CLOSING SYSTEM IN THE REQUIRED POSITION (NO.2)

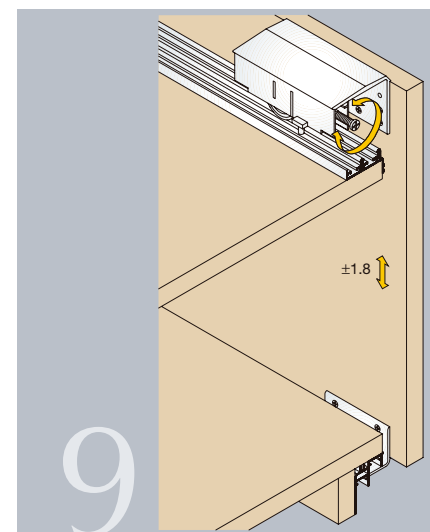
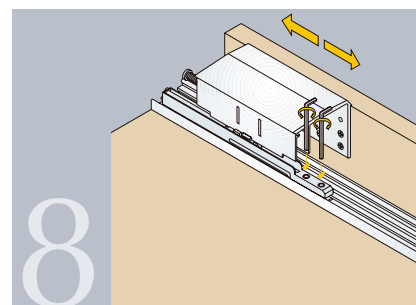
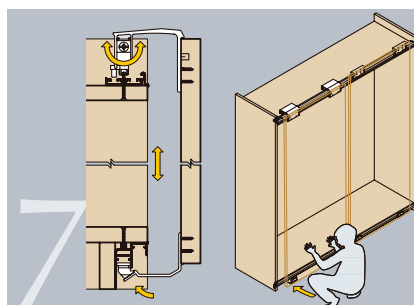
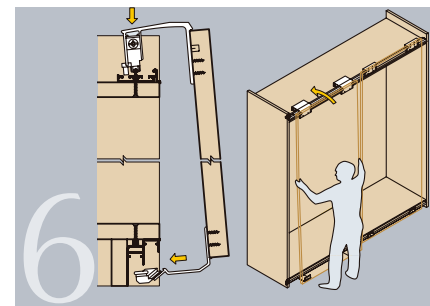
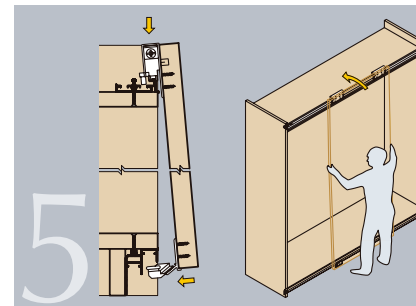
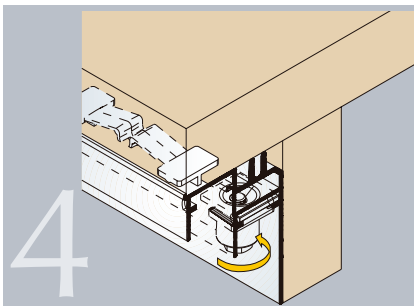
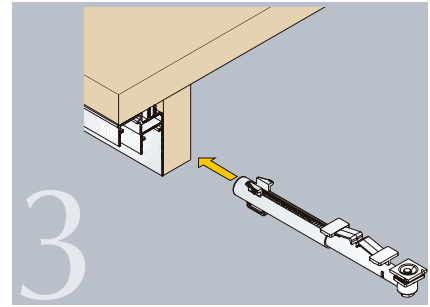
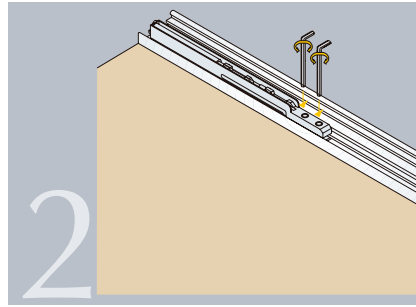
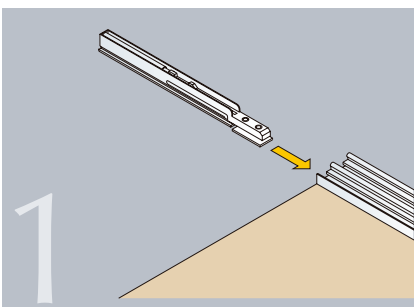
INSERT THE LOWER BRAKE, PLACING THE SCREWS TOWARDS THE EXTERIOR OF THE CABINET. (NO.3) POSITION AND FIX THE LOWER BRAKE. (NO.4)

THE DOORS ARE ASSEMBLED BY PLACING THEM IN THE UPPER TRACK AND THEN PUSHING THEM DOWN GENTLY UNTIL THE FITTING IS INSERTED INTO THE LOWER TRACK. (NO.5, NO.6)

THE DOORS' HEIGHT IS ADJUSTED FROM THE SIDE. (NO.7)


ONCE THE DOORS HAVE BEEN ASSEMBLED AND POSITIONED, ACTIVATE THE CLOSING DEVICE, OPENING AND CLOSING THE DOOR. (NO.8)

THE DISMANTLING PROCESS IS AS THE ASSEMBLY PROCESS BUT IN REVERSE. FIRST RELEASE THE LOWER FITTING AND THEN RAISE THE DOOR TO REMOVE IT.




3 "GHOST"

SET OF UPPER AND LOWER TRACKS.

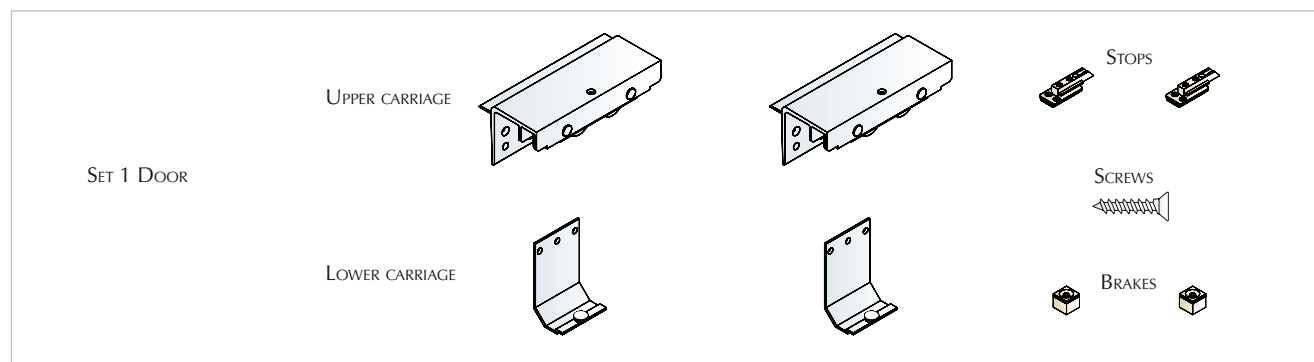
	CUT-TO-MEASURE	
NATURAL	707.700.501	1



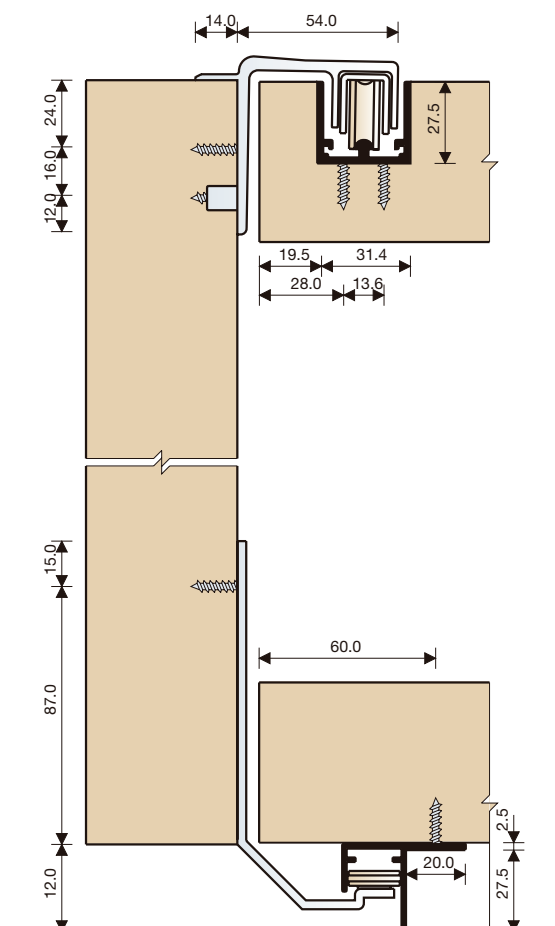
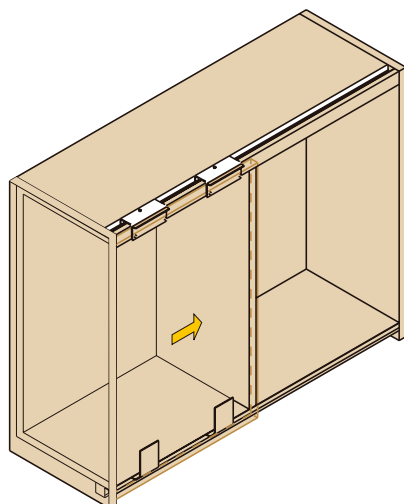
SET OF FITTINGS.

		
1 DOOR	704.700.102	1

IT CONTAINS 2 UPPER ROLLERS AND 2 LOWER CARRIAGES, 2 UPPER BRAKES AND 2 LOWER BRAKES, 1 BAG OF SCREWS NECESSARY FOR ONE DOOR.

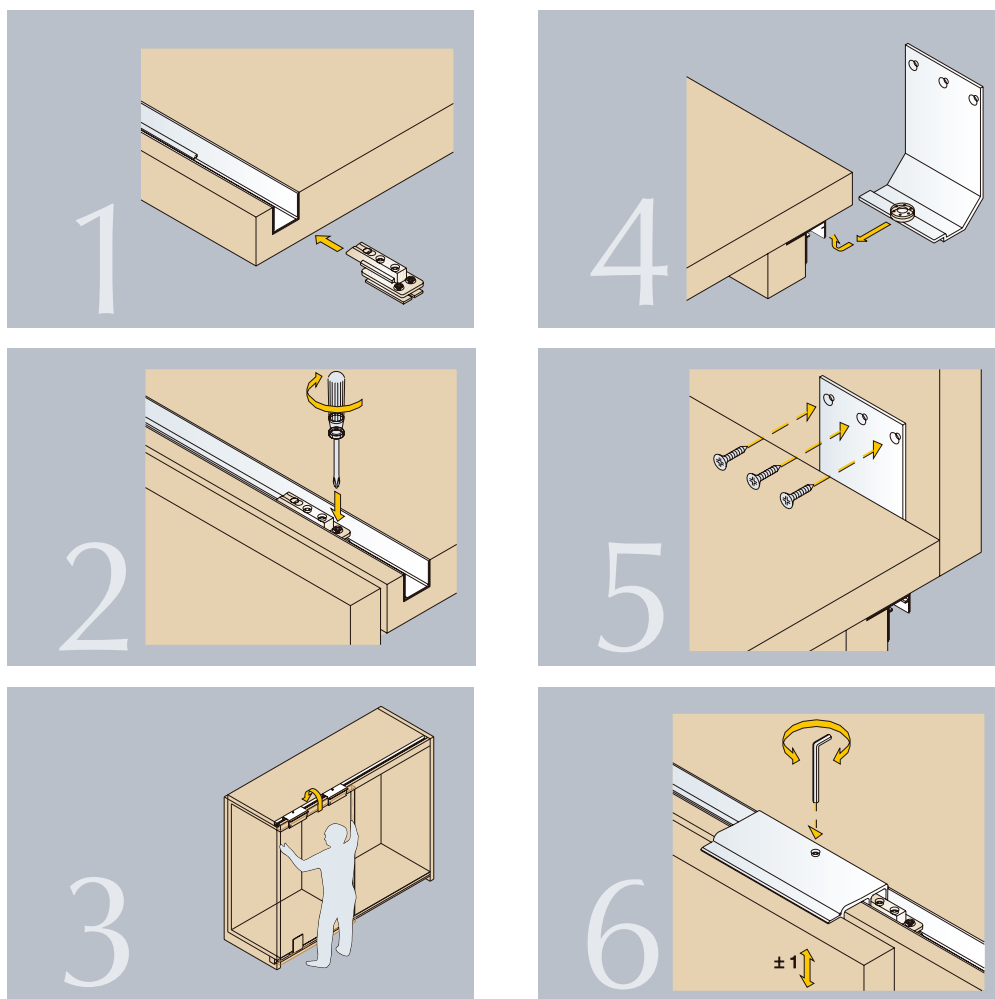


■ TECHNICAL DATA



■ TECHNICAL DATA

Assembly



Drilling

