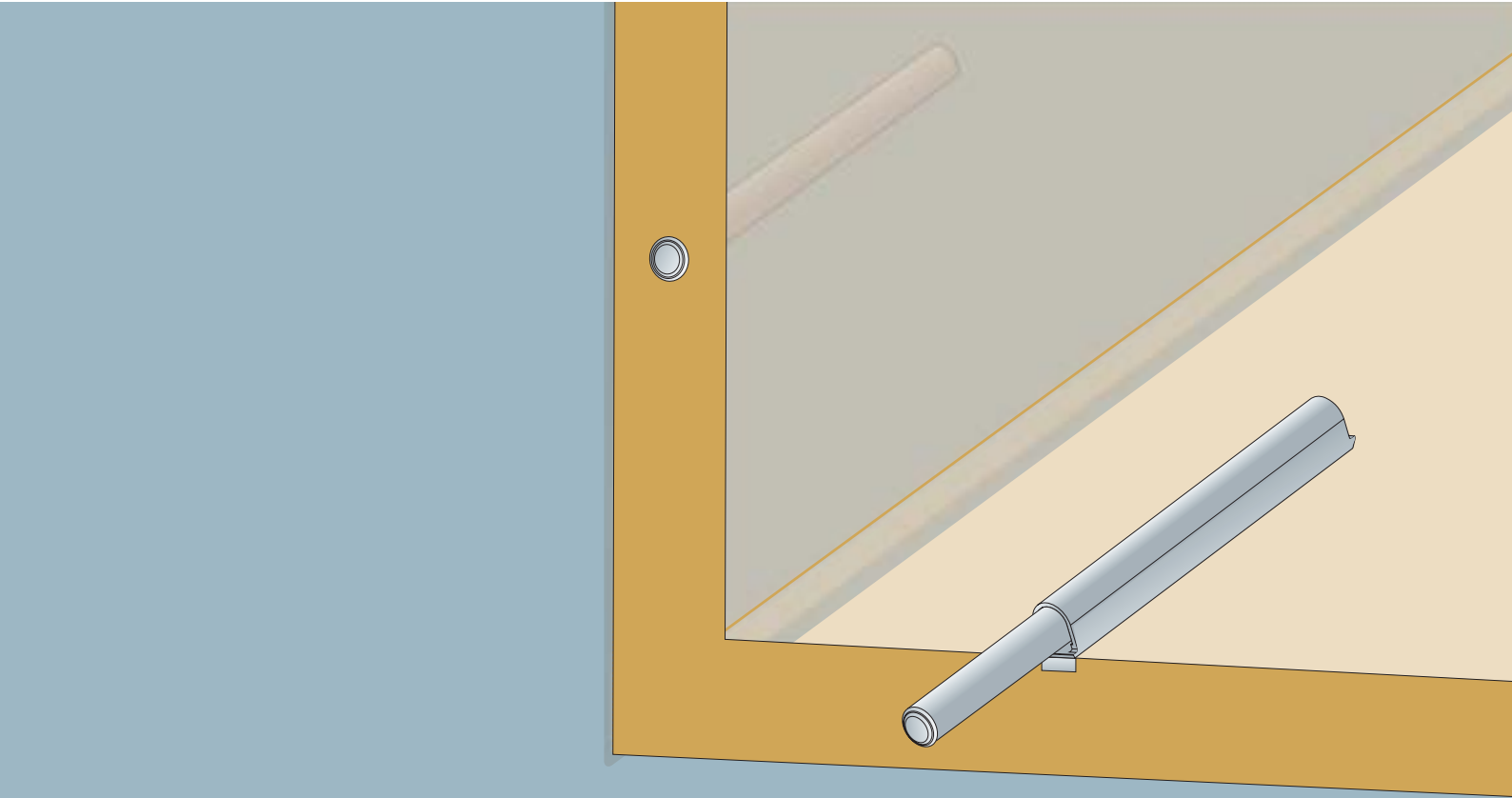




# INDAUX



NEW OPENING SYSTEM WITHOUT THE NEED FOR HANDLES. YOU ONLY NEED TO CLICK THE FITTING TO ACTIVATE A MECHANISM THAT COMBINES WITH AN INVERSE-OPENING HINGE THAT ALLOWS THE DOOR TO OPEN THROUGH 90 DEGREES.

---

opening device  
retention device

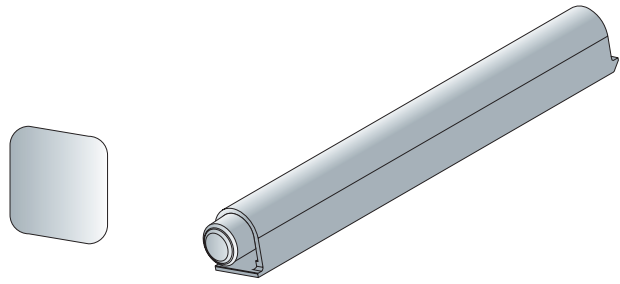
---

FITTINGS

LAY-ON MAGNETIC FITTING

LENGTH OF EXPULSION		20 MM.	40 MM.
WHITE	RAL-9001	213.020.006	213.040.004
BLACK	RAL-9005	213.020.021	213.040.026
GREY	RAL-7040	213.020.312	213.040.310

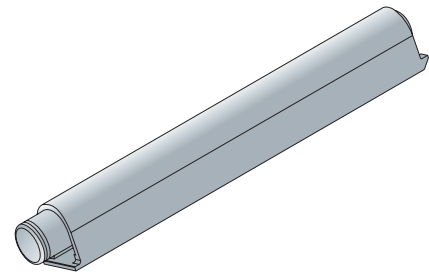
100 PIECES TO A BOX.  
EACH REFERENCE CONSISTS OF 1 FITTING AND AN ADHESIVE CLOSING STOP.



LAY-ON FITTING WITH STOP

LENGTH OF EXPULSION		20 MM.	40 MM.
WHITE	RAL-9001	213.120.003	213.140.001
BLACK	RAL-9005	213.120.025	213.140.023
GREY	RAL-7040	213.120.316	213.140.314

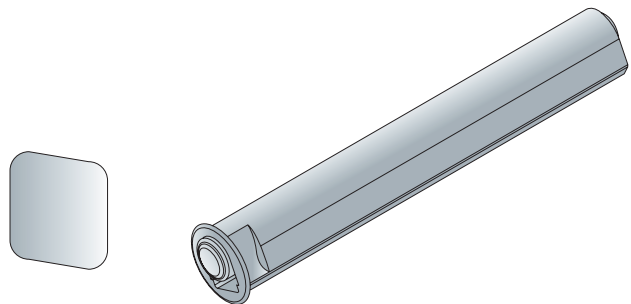
100 PIECES TO A BOX.



EMBEDDED MAGNETIC FITTING

LENGTH OF EXPULSION		20 MM.	40 MM.
WHITE	RAL-9001	213.220.000	213.240.005
BLACK	RAL-9005	213.220.022	213.240.020
GREY	RAL-7040	213.220.313	213.240.311

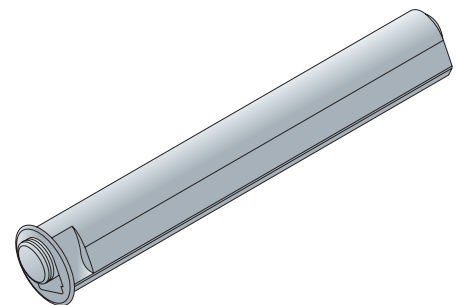
100 PIECES TO A BOX.  
EACH REFERENCE CONSISTS OF 1 FITTING AND AN ADHESIVE CLOSING STOP.



EMBEDDED FITTING WITH STOP

LENGTH OF EXPULSION		20 MM.	40 MM.
WHITE	RAL-9001	213.320.004	213.340.002
BLACK	RAL-9005	213.320.026	213.340.024
GREY	RAL-7040	213.320.310	213.340.315

100 PIECES TO A BOX.



## BASE PLATES

---

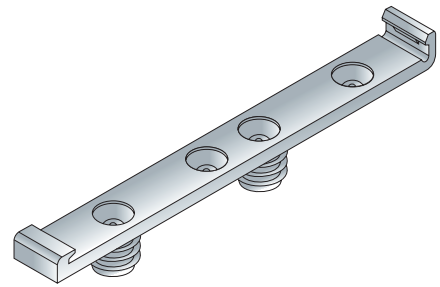
### DOWEL-FIX BASE PLATE WITHOUT STOP

---

WHITE	RAL-9001	214.000.006
BLACK	RAL-9005	214.000.021
GREY	RAL-7040	214.000.312

---

100 PIECES TO A BOX.



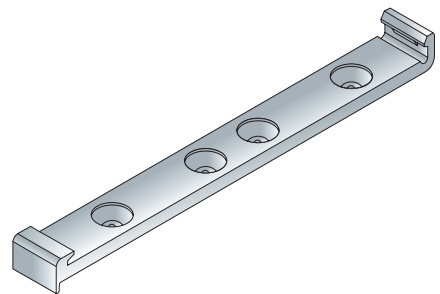
### SCREW-FIX BASE PLATE WITH STOP

---

WHITE	RAL-9001	214.100.003
BLACK	RAL-9005	214.100.025
GREY	RAL-7040	214.100.316

---

100 PIECES TO A BOX.



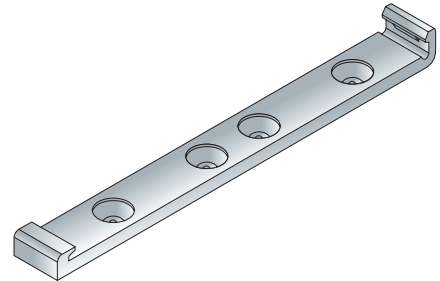
### SCREW-FIX BASE PLATE WITHOUT STOP

---

WHITE	RAL-9001	214.200.000
BLACK	RAL-9005	214.200.022
GREY	RAL-7040	214.200.313

---

100 PIECES TO A BOX.

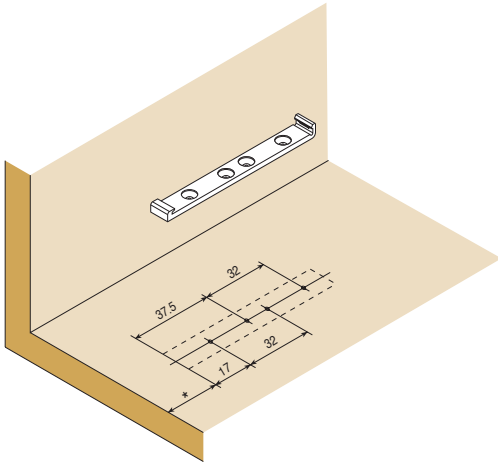


## FIXING OF BASE PLATES

---

### SCREW-FIX BASE PLATE

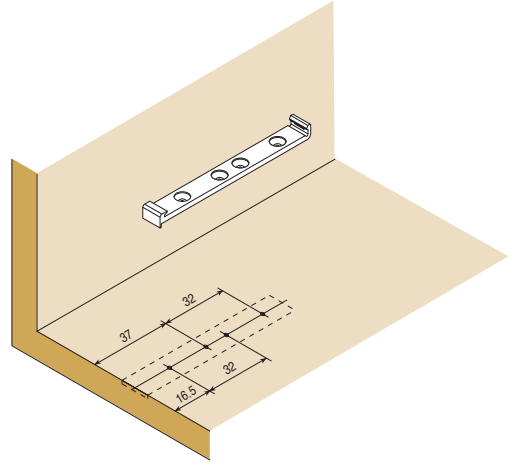
---



\* DISCRETIONARY DISTANCE

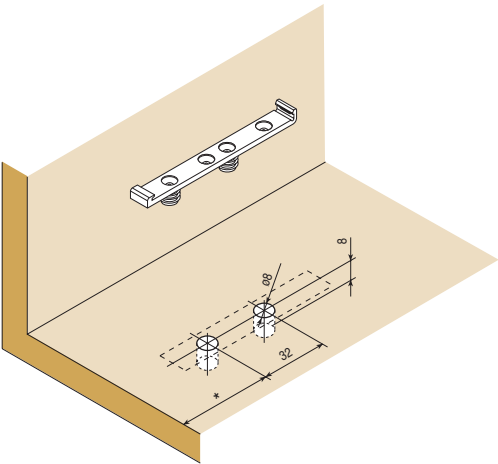
### SCREW-FIX BASE PLATE WITH FRONT STOP

---



### DOWEL-FIX BASE PLATE

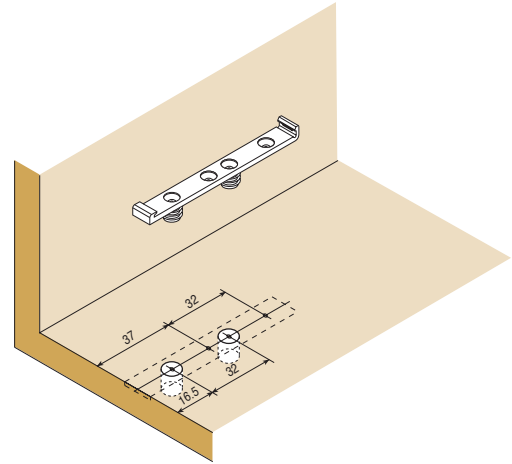
---



\* DISCRETIONARY DISTANCE

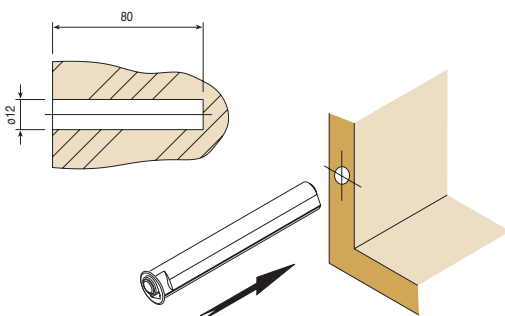
### DOWEL-FIX SYSTEM 32 BASE PLATE

---



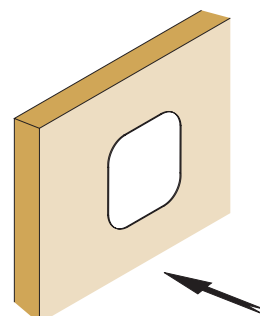
### EMBEDDED FITTING

---

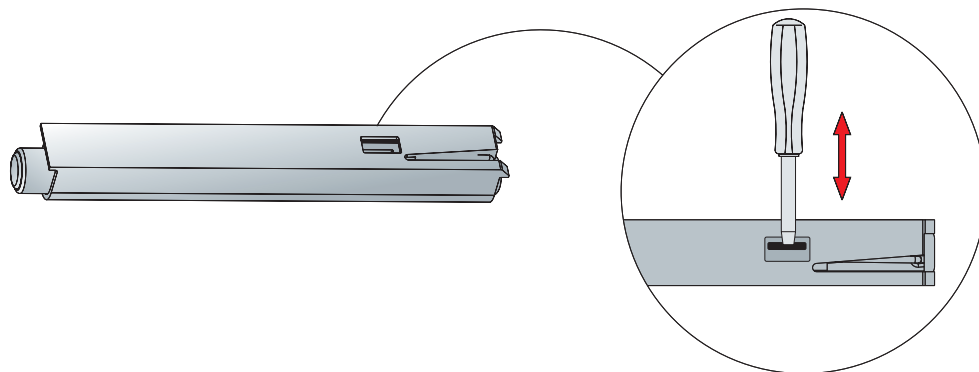


### FIXING STOP

---

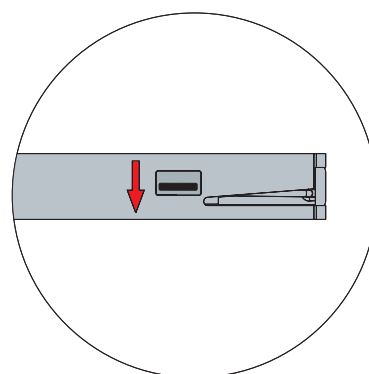
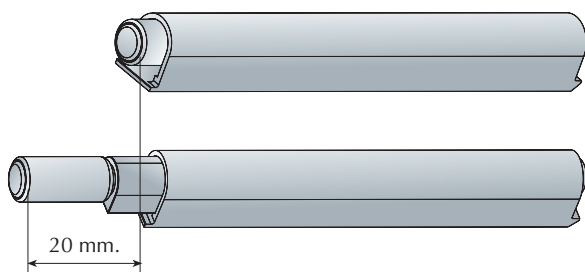


## CHOICE OF LENGTH OF EXPULSION

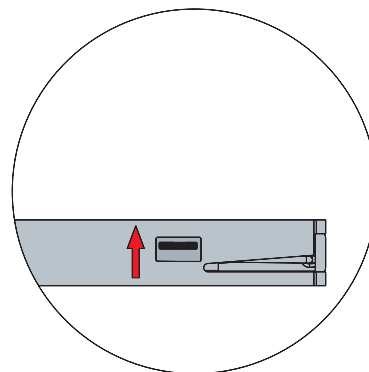
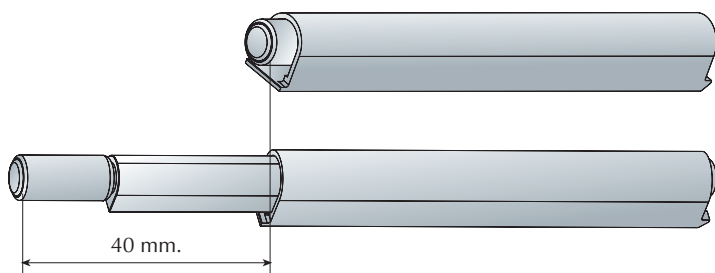


WITH FITTING CLOSED, VIA THE WINDOW;  
PRESS WITH A SCREWDRIVER TO CHOOSE THE DESIRED  
LENGTH OF EXPULSION.

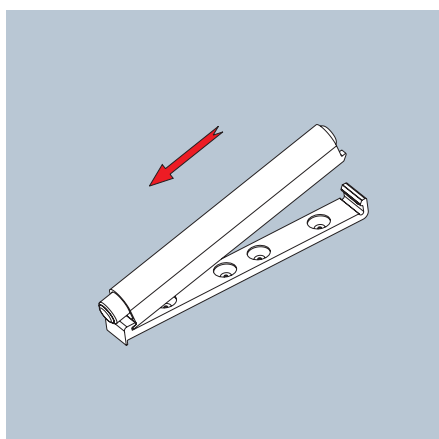
### 20 MM. EXPULSION



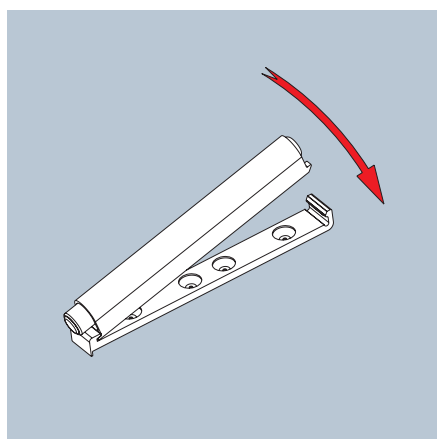
### 40 MM. EXPULSION



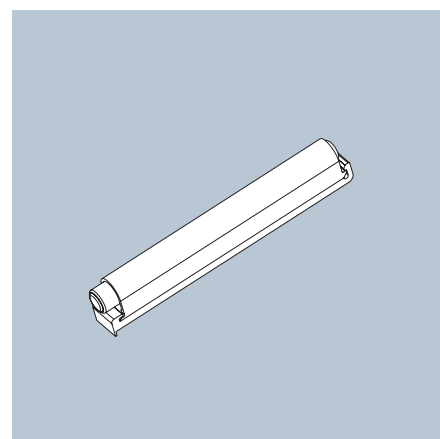
## FITTING TO THE BASE PLATE



CLIP THE BODY TO THE FRONT OF THE BASE  
PLATE.



PRESS THE BODY ONTO THE BACK OF THE  
BASE PLATE UNTIL FIXED.



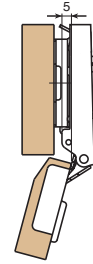
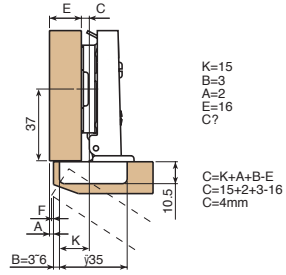
INVERSE-OPENING HINGE "MESUCO 143 RAPID"



FULL OVERLAY (0MM.)



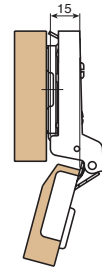
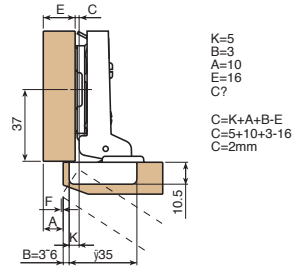
K = CONSTANT = 15 MM.



HALF OVERLAY (10 MM.)



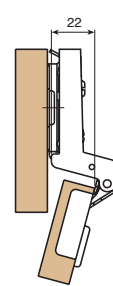
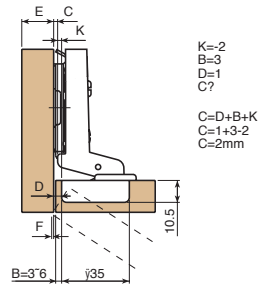
K = CONSTANT = 5 MM.



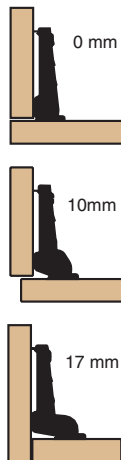
FULL INSET (17 MM.)



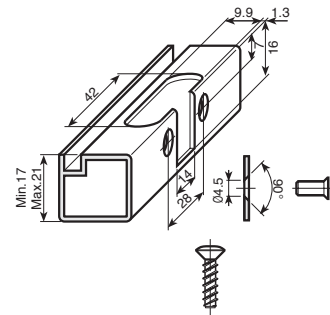
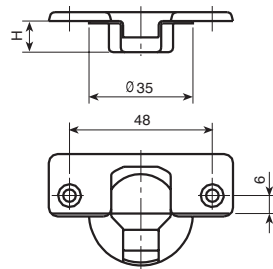
K = CONSTANT = -2 MM.



REFERENS

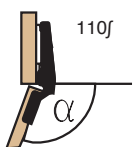


988.715.066



988.717.063

$\alpha$  = OPENING ANGLE  
 H = CUP DEPTH (MM.)



$\alpha = 0^\circ \div 110^\circ$   
 H = 10.5

0 MM.  
 10 MM.  
 17 MM.

NICKEL

	SCREW-FIXED	WITH DOWELS	EXPAND	ALUMINIUM FRAMES
	060.040.153	060.041.155	060.043.152	306.000.052
	061.140.155	061.141.150	061.143.154	306.100.056
	062.140.153	062.141.155	062.143.152	306.200.053

MOUNTING PLATES. INVERSE-OPENING "MESUCO 143 RAPID"

SCREW-FIXED

HEIGHT MM.	2	4
NICKEL-PLATED ZAMAK	083.041.114	083.041.210

KNOCK-IN

HEIGHT MM.	2	4
NICKEL-PLATED ZAMAK	083.141.111	083.141.214

SCREW-FIXED

HEIGHT MM.	2	4
NICKEL-PLATED STEEL	083.243.123	083.243.226

KNOCK-IN

HEIGHT MM.	2	4
NICKEL-PLATED STEEL	083.343.120	083.343.223

SCREW-FIXED WITH CENTERER

HEIGHT MM.	2	4
NICKEL-PLATED STEEL	083.743.122	083.743.225

KNOCK-IN WITH CENTERER

HEIGHT MM.	2	4
NICKEL-PLATED STEEL	083.748.125	083.748.221

PRE-MOUNTED EURO-SCREW

HEIGHT MM.	2	4
NICKEL-PLATED STEEL	083.643.125	083.643.221

SCREW-FIXED

HEIGHT MM.	2	4	6	9
NICKEL-PLATED ZAMAK	083.241.115	083.241.211	083.241.314	083.241.410

KNOCK-IN

HEIGHT MM.	2	4	6	9
NICKEL-PLATED ZAMAK	083.341.112	083.341.215	083.341.311	083.341.414

PRE-MOUNTED EURO-SCREW

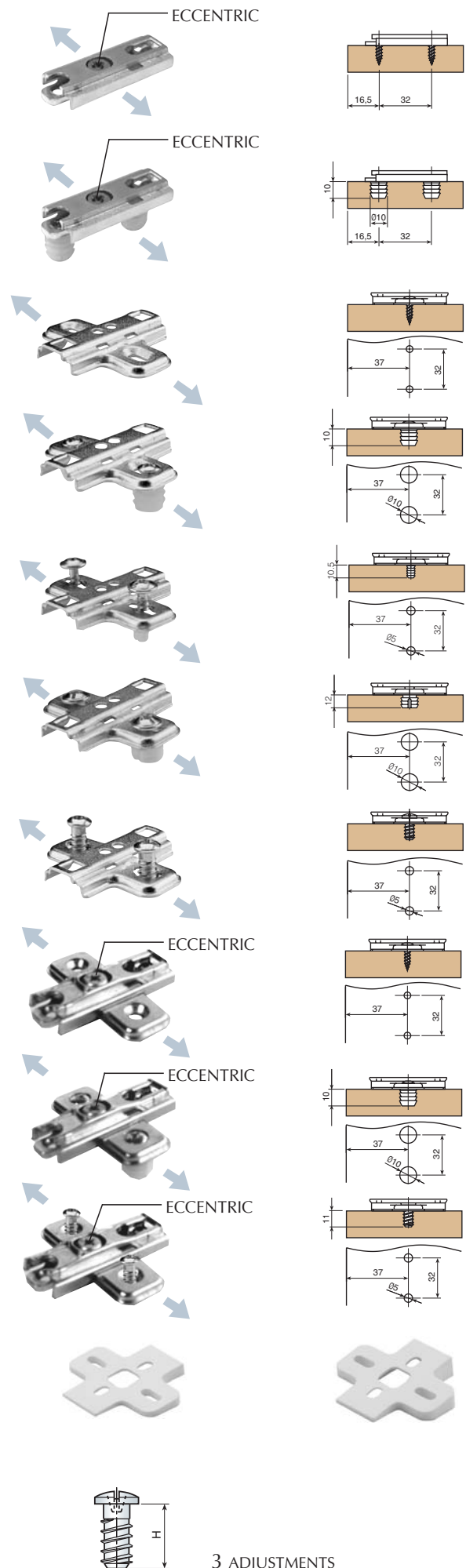
HEIGHT MM.	2	4	6	9
NICKEL-PLATED ZAMAK	083.641.110	083.641.213	083.641.316	083.641.412

SPACER WEDGER FOR WING PLATE

ANGLE.	5°	10°
WHITE	352.905.000	352.910.003
BROWN	352.905.011	352.910.014
BLACK	352.905.022	352.910.025

EURO-SCREW

H MM.	11	13 (STANDARD)
NICKEL	951.211.063	951.216.60





# INDAUX

**Industrias Auxiliares (INDAUX), S.A.**

San Prudencio, s/n 20808 GETARIA (Guipúzcoa)  
SPAIN.

Telf. +34 943.140.300

Fax. +34 943.140.534

Apto. Correos 132 - 20800 ZARAUTZ (Guipúzcoa)  
ESPAÑA

E-mail: [indaux@indaux.com](mailto:indaux@indaux.com)

**INDAUX UK Ltd.**

MGA House

Ray Mill Road East

Maidenhead

Berkshire

United Kingdom SL6 8ST

Tel. +44 1628.780.250

Fax. +44 1628.780.251

E-mail: [uk@indaux.com](mailto:uk@indaux.com)

**INDAUX GmbH**

Nickelstrasse 17

33378 Rheda-Wiedenbrück / Lintel

Deutschland

Tel. +49 5242 4060 75

Fax. +49 5242 4060 77

E-mail: [deutschland@indaux.com](mailto:deutschland@indaux.com)

For more information, visit our web page or send us an  
e-mail to:

**Web: [www.indaux.com](http://www.indaux.com)**

**E-mail: [info@indaux.com](mailto:info@indaux.com)**



**ISO 9001**